

- High Speed Switching Transformer for AC Coupled MOSFET and IGBT Gate Drive Circuits
- Low Leakage Inductance
- Class B Insulation System
- Switching Frequency: 100 kHz to 2 MHz
- Operating Temperature: -40°C to +125°C
- Ideal for Automotive and Industrial Applications
- Designed to meet AEC-Q200 Grade 1

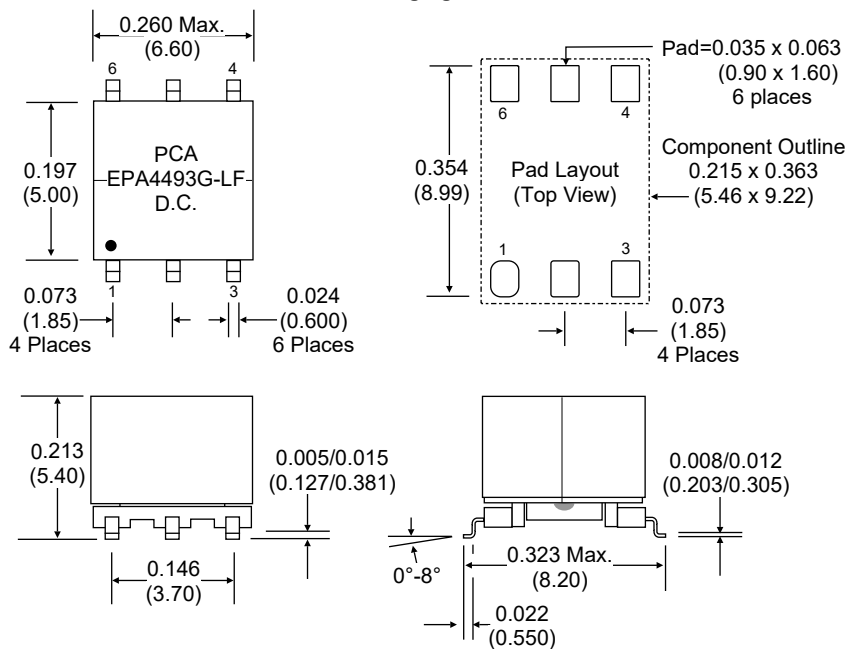
Electrical Specifications @25°C

Inductance ¹ (μ H Min.)	Le ^{1,2} (μ H Max.)	DCR (Ω max.)			Cw-w (pF Max.)	Turns Ratio Pri. : Sec.1 : Sec.2	ET-Constant ³ (V-usec Min.)	Isolation (Vrms)	
		Pri.	Sec.1	Sec.2	Pri. - Secs.			Pri. - Secs.	Pri. & Secs.-Core
250	0.3	1.5	1.5	1.5	95	1 : 1 : 1	20	500	500

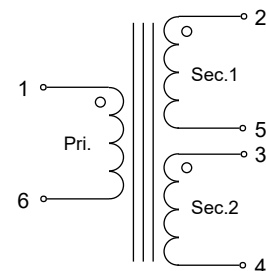
Notes:

- 1) Measured at 100 kHz 0.1 Vrms
- 2) Measured at Primary with Secondary shorted
- 3) AC-Coupled Driven

Packaging



Schematic



- Product weight: 0.51 gms.
- Lead Finish: Hot Dipped Sn or SnCu
- Moisture sensitivity level: 1
- Resistance to solder heat: 245°C
- Ordering Information:
Tape & Reel (1000 pcs / 13" Reel)
Tube: 80 pcs / tube

Unless Otherwise Specified Dimensions are in Inches /mm \pm .010 / .25

Product performance is limited to specified parameters. Data is subject to change without prior notice.