

# Surface Mount Low Power Push-Pull Transformers

## EPC3126G-X-LF



- Designed for use with Maxim Max 253/845
- PFA Teflon Insulation (Triple Insulated Wire)
- UL1446 Class H (Class 180) Insulating System
- Operating Temperature : -40°C to +85°C
- UL94-V0 Recognized Materials
- Up to 1 Watt
- Switching Frequency: 250KHz - 1MHz

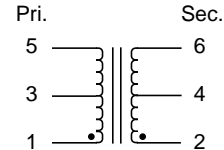
### Electrical Parameters @ 25° C

PCA Part Number	Voltage (V)		Primary OCL (µH Min.)	Turns Ratio (Pri. to Sec.)	ET (V-µSec.)	Duty Cycle (%)	Rectification (Half or Full Wave)
	V in	V out					
			@ 100 KHz, 0.1 Vrms		@ 350 KHz		Connections
EPC3126G-1-LF	5	15	500	1CT:2CT	11	75	Voltage Doubler
EPC3126G-2-LF	3.3	5	500	1CT:2CT	11	75	† Output Center Tap
	5	5	500	1CT:1.3CT	11	75	† Output Center Tap
EPC3126G-3-LF	5	10	500	1CT:1.3CT	11	75	Voltage Doubler
EPC3126G-4-LF	5	10	500	1CT:2.6CT	11	77	† Output Center Tap
EPC3126G-5-LF	5	12	500	1CT:3CT	11	80	† Output Center Tap
	5	24	500	1CT:3CT	11	80	Voltage Doubler
EPC3126G-6-LF	3.3	5	500	1CT:1CT	11	75	Voltage Doubler
EPC3126G-7-LF	5	5	500	1CT:0.6CT	11	83	Voltage Doubler
EPC3126G-7-LF	5	12	500	1CT:1.5CT	11	80	Voltage Doubler

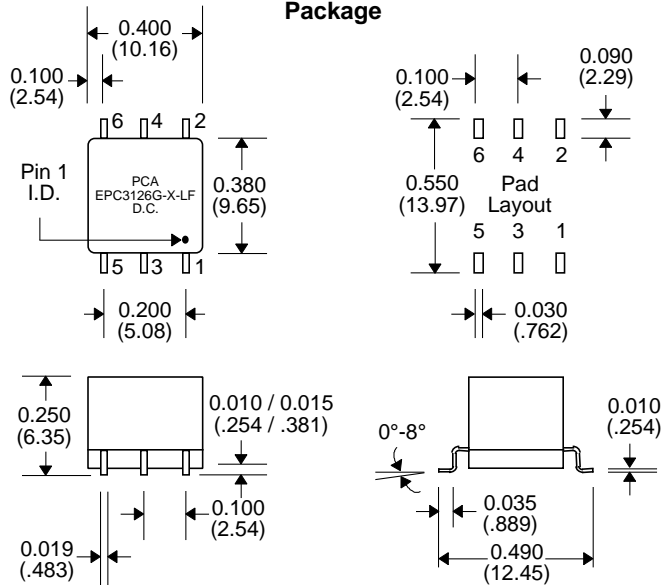
- **Isolation** : 4500 Vrms (100% Tested 1 Min.)
- **† Connections** : Output Center Tap as Common/Return

Notes :	EPC3126G-X-LF
1. Assembly Process (Solder Composition)	Hot Dipped Sn
2. Peak Solder Rating	260°C
3. Moisture Sensitive Levels (MSL)	4 (72 Hours, 30°C/60%RH)
4. Weight	1.2 grams
5. Packaging Information	(Tube) 55 pcs / tube (Tape & Reel) 500 pieces/13" reel

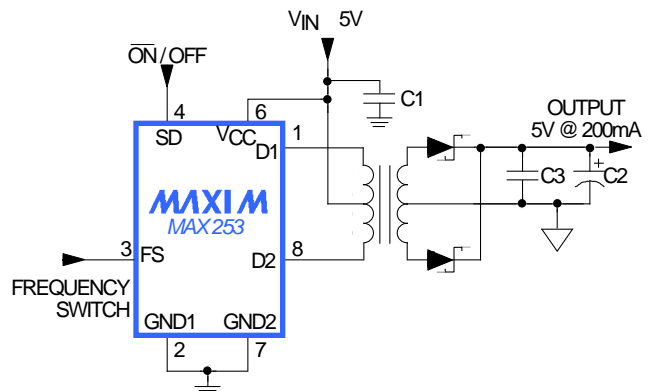
### Schematic



### Package



### Application



Unless Otherwise Specified Dimensions are in Inches /mm ± .010 / .25