

Forward Transformer

EPC3636G-LF

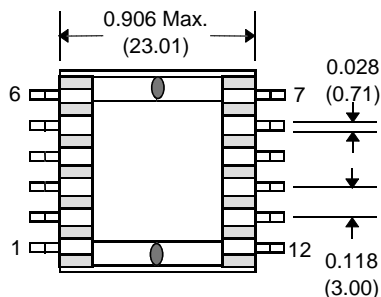
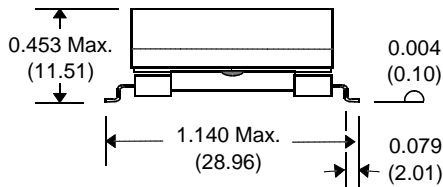
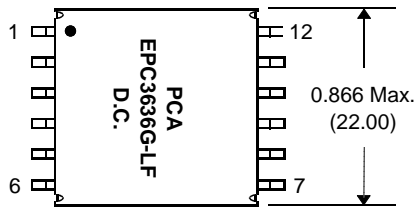


- Bobbin : UL94V-0 Recognized Materials
- Storage Temperature : -40°C to +125°C
- Operating Temperature : -40°C to +85°C
- Switching Frequency : 250 KHz

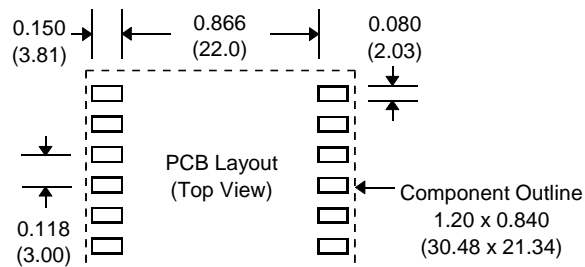
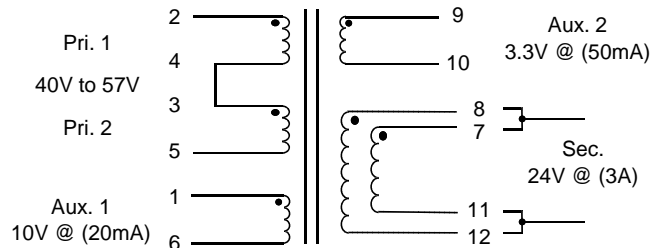
Electrical Parameters @ 25°C

Inductance ($\mu\text{H} \pm 30\%$)	Leakage Inductance ($\mu\text{H Max.}$)	Cw-w (pF Max.)	Turns Ratio	DCR (m Ω Typ.)				IR (Vdc)	Dielectric Rating (Vrms)
@ 100 KHz, 1.0 Vrms	@ 100 KHz, 1.0 Vrms	@ 100 KHz, 1.0 Vrms						2M Ω Min.	
180	0.250	190	1:1:1.33:0.5:2.66	25	480	90	50	500	1500
Pri.	Pri. w/ Aux. and Sec. shorted	Pri. to Aux. and Sec.	Pri. 1 : Pri. 2 : Aux.1 : Aux. 2 : Sec.	Pri.	Aux.1	Aux.2	Sec.	Wdg. - Wdg.	Wdg. - Wdg. Wdgs. - Core

Package



Schematic



Notes :	EPC3636G-LF
1. Lead Finish	Hot Tin Dip (Sn) or SnCu
2. Peak Solder Rating (for wave solder process Only)	260°C
3. Weight	TBD
4. Packaging Information (Tray)	40 pcs / Tray

Unless Otherwise Specified Dimensions are in Inches /mm $\pm .010 / .25$